



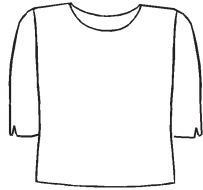
This is our favorite medium weight fabric for everyday wear. This fabric has a subtle, slightly crinkled texture. It drapes like heavy silk and is very soft. These Tencel clothes are durable, practical, easy to care for, and a pleasure to wear. Fluid and flowing, Tencel drapes in soft, gentle folds. If you haven't worn Tencel yet, you are missing out on enjoying affordable luxury.

These are our most popular styles, and we are able to customize any garment to suit you, such as a little longer or shorter lengths, pockets, or adding a little here or there. Give us a call and we can talk about styles that would suit your body shape, sizes and colors.

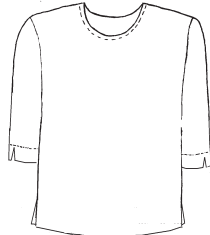
TENCEL TWILL



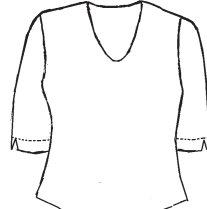
Sally Blouse
XS - XL
3/4 sleeve \$74
short sleeve \$72
long sleeve \$74



Crop Tina Blouse
S - XL
2' slits at hem
short sleeves \$52
3/4 sleeves \$54



Lisa Blouse
3/4 sleeve
S - XL \$62



Betsy Bias Blouse
3/4 sleeves
XS - XL
\$64



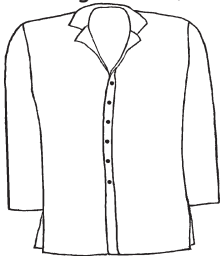
Dot Duster
S-XL \$89



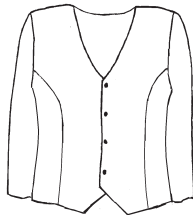
Artist Jacket
a nice lightweight
layer
S-XL \$89



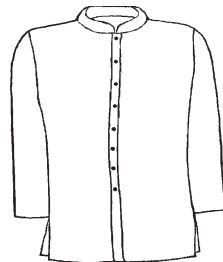
Travlers Jacket
"Braid" weave Tencel
inside pockets
S-XL \$89



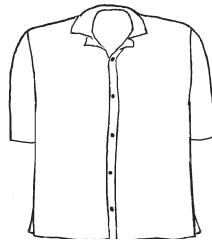
Sylvie Tunic
S-XL
\$78



Victoria Blouse or Jacket
XS - XL
long sleeve \$78
short sleeve \$76



Daphne Tunic
S-XL
\$78



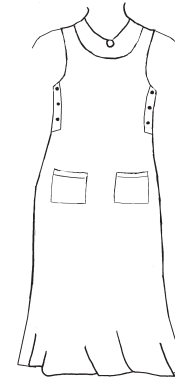
Camp Shirt
loose cut, not fitted
S - XL
\$74



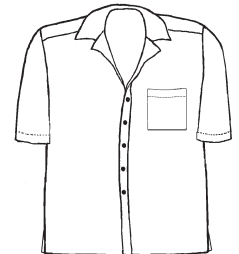
Dina Blouse
Slightly shaped, no darts
3/4 sleeves, can be worn
as a jacket
S-XL \$75



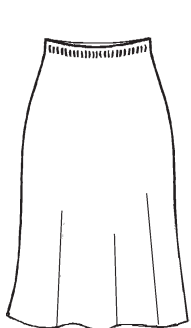
Capri Pant
18" inseam
S-XL \$66



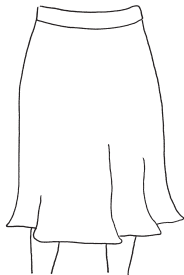
Bella Jumper
S - XL \$86



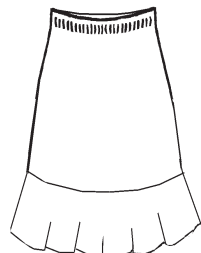
Tony Men's shirt
S-XL \$76



Nora Skirt
Bias cut
center back seam
S-XL \$75



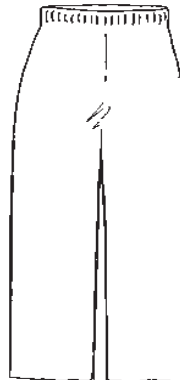
Annie Skirt
just below knee length
bias cut XS - XL
\$63



Dandy Skirt
bias cut, bias ruffle
XS - XL
\$69



Janie Crop Pant
XS - XL
20" inseam \$64
Jacke Crop Pant
with pockets
XS - XL
\$68



Pallazzo Pant
straight, wide leg
no pockets. 30"
XS - XXL
\$69



Hilda Pant, for women
with straight hips,
relaxed fit, slightly
tapered leg. 30"
side seam pockets
S-XXL \$74



Holly Pant
Similar to Dory,
not as slim fit.
Full hips, 30"
length
M - XXL \$74



Dory Pant
tapered ankle,
full hips and thighs,
but a slim fit. 28"
For "pear" figure
S - XXL \$74



2-Button Pant
elastic back
no pockets
S-XL
\$82
Crop length \$80